

**WELCOME TO THE WORLD OF**

**PENTA  
HOTELS**

**LIEGE CENTRE**



**YOUR NEIGHBOURHOOD LIFESTYLE HOTEL**

# **PENTAFACTS. LIEGE CENTRE**

- 105 rooms - Lots of room for you to dance the Macarena
- 2 conference rooms – up to 50 guests
- Our signature pentalounge
- Restaurant & bar
- Pool table, Pinball and PS4
- Pentagym!
- Free and premium WiFi

**And only 1 you**



# PENTALOUNGE. BAR



**Who needs a receptionist  
for check ins?**

**PENTA  
HOTELS**



# PENTA LOUNGE. POOL TABLE



A popular spot to socialize,  
play games or listen to the latest tunes

PENTA  
HOTELS



# PENTALOUNGE. RESTAURANT



**Cheers to pentalicious  
where culture meet food**

**PENTA  
HOTELS**



# PENTA LOUNGE. BREAKFAST

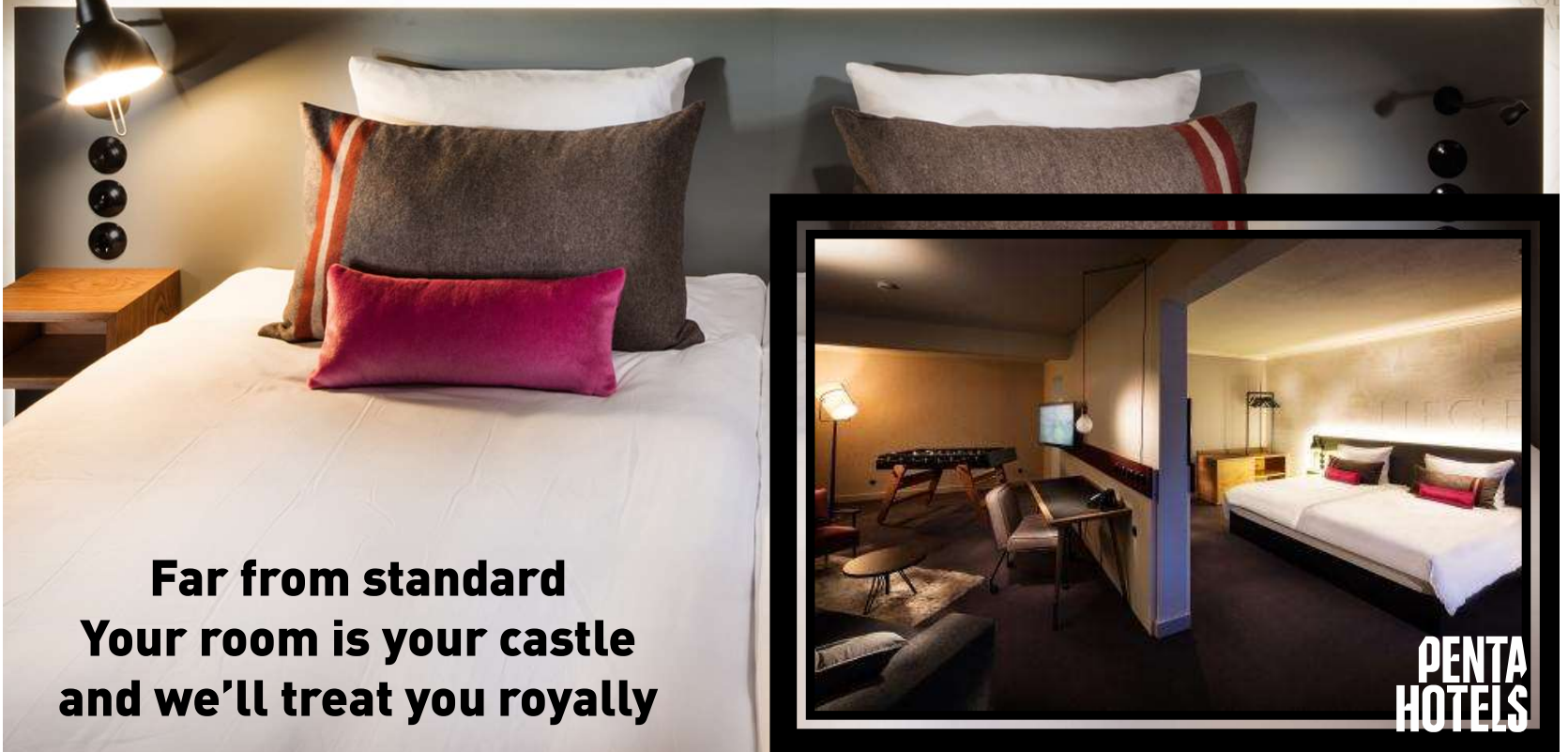


The best way to start a nice day!

PENTA HOTELS



# PENTAROOM. 3 DIFFERENT COMFORT



**Far from standard  
Your room is your castle  
and we'll treat you royally**

**PENTA  
HOTELS**



# PENTAGYM. SPORTS

Work, play, compete  
a penta philosophy :  
add relaxation to work...

PENTA  
HOTELS



# MEETINGS & EVENTS.

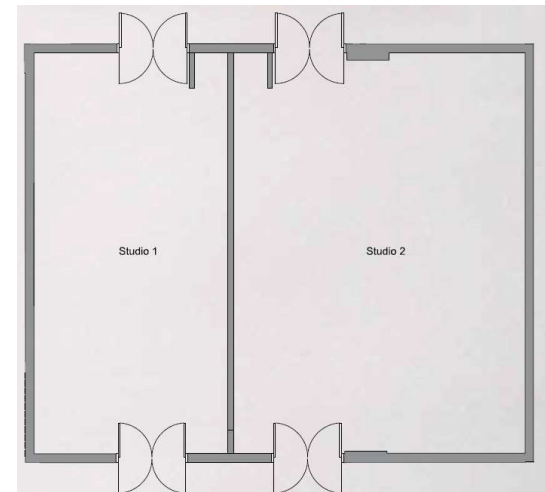


Life is too short  
for boring meetings

PENTA  
HOTELS

# MEETINGS & EVENTS. CAPACITIES

Salon	Size	Surface area	Height	Bloc	school	Theater	U	Tarif TTC
Studio 1 1	0,0 x 5,0	50 m <sup>2</sup>	2,85	12	12	35	8	€ 500
Studio 2	10,0 x 7,0	70 m <sup>2</sup>	2,85	20	20	60	16	€ 700
Studio 1+2	10,0 x 12,0	120 m <sup>2</sup>	2,85	30	60	80	40	€ 1200



A function room adapted to the number of participants and fitted with:  
Large screen, LCD – Projector\*, paperboard, markers\*, notepads\*, pens\*, WiFi (free) or high speed access (additional), water\*.

\* Included in the meeting package.

**Let's get down to business**

Pentahotel Liège, 100 Bld de la Sauvenière 4000 Liège. Tel: 04/221.77.11- Fax: 04/221.77.01- @: info.liege@pentahotels.com



# "All-in" work days

Choose a theme for each break ...

1. Nutritional break: coffee, tea, fruit juice, smoothie and fresh fruit and ganola or muesli
2. Original Break: coffee, tea, fruit juice and healthy tapas (hummus, grisini, vegetables,...)
3. Break all sweet: coffee, tea, fruit juice and 2 sweet accompaniments



PENTA DAY DELEGATE RATE AS OF 44.00 €\*\* including:

- Main meeting room rental (as well as the set-up and the basic equipment (conference kit, flipchart, notepads and pens,).
- Unlimited mineral water in the meeting room
- The morning coffee break (choice between original, nutritional or all in sweet).
- A quick lunch (choice between a 2 course menu (penta meal) or sandwich buffet or pentacheeseburger\*/ cesar salad\*/ veggie-burger\* (\*, selection inbetween these 3\* dishes can be made in the morning of the meeting day by the participants)
- Water, juice and coffee.
- The afternoon coffee break (choice between original, nutritional or all in sweet)



PENTA PLUS DAY DELEGATE RATE AS OF 54.00 €\*\* including:

- Main meeting room rental (as well as the set-up and the technical equipment (screen, beamer, conference kit, flipchart, notepads and pens,).
- Mineral water and soft drinks in the meeting room.
- The morning coffee break (choice between original, nutritional or all in sweet).
- A quick lunch (choice between a 3 course menu (penta meal) or sandwich buffet (accompanied by a soup, salads and 2 desserts) or pentacheeseburger\*/ cesar salad\*/ veggie-burger\* (\*, selection between these 3\* dishes can be made in the morning of the meeting day by the participants)
- Water, soft drinks, juice and coffee.
- The afternoon coffee break (choice between original, nutritional or all in sweet).



\*\* The prices listed are subject to availability, and may vary depending on the time of year and number of bookings. Rates are applicable to a minimum of 10 persons. All prices listed include VAT.

# "A la carte" meetings

## Rental Material:

Rental of LCD Projector 8 h	€ 99.00
Laser pointer	€ 9.00
Note pads and pens per person	€ 4.00
Conference Kit	€ 19.00
Lectern	€ 19.00
Other items on request	

WIFI HS INCLUDED

## Meeting room rental:

Rental of main meeting room	from € 10.00/m2
Rental of break out rooms	from € 5.00/m2

## DRINK PACKAGES:

Drink Package 1 glass	€ 10.00
1 Drink (house wine, beer, soft), water and coffee	
Drink Package 2 Glasses	€ 15.00
2 Drinks (house wine, beer, soft) water and coffee	
Aperitifs Package	€ 7.00
Choice of 1 glass (Prosecco, kir, fruit juice)	
Mineral water (1 l)	€ 8.00

## Coffee Breaks:

Welcome Coffee	€ 7.00
(coffee, tea, fruit juice and pastries)	
Coffee break of your choice	€ 7.00
Thermos of coffee / tea	€ 10.50

## LUNCH / DINNER:

3 course menu « pentaPlus » € 39.00  
A starter, a main dish and a dessert ("pentaPlus" menu)

4 course menu « pentaPlus » € 49.00  
A starter, a main dish, a cheese plate and a dessert  
("pentaPlus" menu)

Buffet /BAR € 27.00  
Sandwich-BAR + soup, salad bar and 2 deserts

Snack buffet pentaPlus € 37.00  
soup, 2-3 vegetables, 3-4 salads, starters, main courses (1  
vegetarian dish), desserts, cheese

2 course menu « PENTA » € 24.00  
A starter & a main dish, or a main dish & a dessert ("penta"  
menu)

3 course menu « PENTA » € 28.00  
A starter, a main dish and a dessert ("penta" menu)

Other menus are on request



# “evening” meetings

120m2 room with a "theatre" party for the meeting and a party with stand-up for the catering + lobby for coffee

## **Sandwich + dessert Package and beverage package:**

Meals in the form of elaborate sandwiches (3/person)  
Open bar: Soft, beer and wine  
Meeting room in theater for 50 people  
After the meeting: choice of Desserts (2 per person) in the room on mange-stand  
Coffee, tea, fruit juice  
All Inclusive Package: €39 per person. (1 \* open bar)

## **Buffet Evening Package + dessert and Beverage package:**

Meal in the form of "finger food" buffet hot and cold in the Pentalounge (min. 25 people, below burger + dessert)  
Italian burger 150gr, onion ring, small fried chicken, finger mozzarella, pizza Party, sandwich with polar bread (salmon, Parma ham....), tomato mozzarella skewer  
2 glasses of wine or beers or softs, water and coffee  
Meeting room in theater for 50 people  
After the meeting: choice of Desserts (2 per person) in the room on high tables.  
Coffee, tea, fruit juice  
All Inclusive Package: €45 per person. (1 \* open bar)

## **Evening package fingers + sandwiches and beverage package**

Onion rings, nachos and small fried chicken on high tables  
Open bar: Soft, beer and wine  
Theatre Room for 50 people  
Buffet Sandwiches and desserts, open bar + Cafe  
All Inclusive Package: €54 per person. (2 \* open bar)

## **Evening package verrines + dessert and drink package:**

meal in the form of verrines (please choose 5 savory)  
Smoked salmon in Japanese style on Blini with poppy seeds  
Black olives tapenade, Grilled focaccia bread  
Duck mousse with spices, onion chutney with raspberry  
Salmon duo rillettes, cherry tomatoes with chopped herbs  
Blue cheese mousse and tartare of marinated peppers  
Serrano ham, black olives, crushed tomato, arugula and parmesan cheese  
Mini tomato-mozzarella salad, olive oil and pesto  
Quinoa with tuna and pink radishes  
Quinoa avocado-grapefruit  
Scallop tartare on its green cream (pea cream with sweet mint) (+ 1 €)  
Crab-crayfish mango-passion cocktail (cream, mascarpone, coriander, pink berries and lime (+ 1 €)  
Gazpacho with fresh goat cheese  
Fillet of herring, beetroot, green apple, young onions and condiments  
Mini frisée with smoked bacon, wine vinegar and quail egg  
Atlantic salmon tartare in duo  
Scampi lime and ginger, served with arugula and dill (+ 1 €)  
Beef tartare with Italian knife (parmesan, arugula, truffle oil, bread, balsamic) (+ 1 €)  
Caviar of tomatoes confit and grissini  
Beans with marinated tomatoes and parmesan cheese  
Mousse of duck foie gras and onion confit (+ 1 €)  
Smoked salmon marinated with chives, creamy dill and trout eggs  
Marinade of peppers with pesto and fresh goat cheese  
Guacamole, fillet of cod with herbs (+ 1 €)  
Tomato marinade with shrimp bouquet  
2 glasses of wine or beer or soft drinks, water and coffee  
theater meeting room for 50 people  
after the meeting: choice of desserts (2 per person) in the dining room  
Coffee, tea, fruit juice  
All inclusive package: 45 € per person. (1 \* open bar)

---

**EATING  
@ PENTAHOTEL**



# Menu « PENTA »

## Starters

Vegetable cream soup of the day  
\*\*\*

Crispy salad with warm goat cheese,  
smoked bacon and Granny Smith  
\*\*\*

Cheese croquettes, salad mesclun,  
parmesan shavings and balsamic  
cream \*  
\*\*\*

Hummus with chickpeas, cashews,  
and grisini \*/\*\*  
\*\*\*

Salmon gravelax with pink pepper  
and dyle sauce, blinis breads

## Main Dish

Salmon pancake with "witloofs",  
shrimp duo and saffron emulsion  
with dill  
\*\*\*

The traditional "Liégeoise"  
meatballs, Jupille beer and Liège  
syrup with fries  
\*\*\*

Beef Burger or Vegan Burger \*/\*\*  
With fries and salad  
\*\*\*

Rumsteak of lamb with thyme and  
honey, bouquet of vegetables and  
gratin Dauphinois  
\*\*\*

Vegan and gluten-free bowl: brown  
rice, avocado, cucumber, radishes,  
onions, coriander,... \*/\*\*

## Desert

Pineapple cooked in a spicy rum syrup,  
served with coconut sorbet \*/\*\*  
\*\*\*

French toast with salted caramel  
butter, custard and vanilla ice cream  
"bourbon"  
\*\*\*

Homemade traditional café "Liégeois" \*  
\*\*\*

Chocolate entremets and red fruit  
coulis \*  
\*\*\*

Chef's Pana cotta \*

\*Vegetarian dishes

\*\*Vegan dishes

Our offers are made according to seasonal products and for minimum 10 people.

**We offer a selection of our different dishes, subject to modifications according to the seasonal products of the market.  
Please make a unique choice for all guests.**

**The number of participants must be communicated to us in writing at least 5 days before the event.**

---

**EATING**  
**@ PENTAHOTEL**



# Menu

## « PENTA + »

### Starter

Warm scampi Lettuce salad with exotic flavors, served with lime & ginger butter dressing

\*\*\*

Beef carpaccio with white truffle oil, served with rocket salad & shredded parmesan

\*\*\*

Small gourmet salad of smoked duck breast with "foie gras", hazelnut and sherry vinaigrette dressing

\*\*\*

Fillet of red mullet with extra-virgin olive oil, seared fennel with dried tomatoes and white butter

\*\*\*

Tofu skewer, sweet&sour sauce and steamed vegetables\*/\*\*

### Main course

Back of pikeperch cooked on scallop skin, velvety peas and mashed potatoes with basil

\*\*\*

Homemade beef tagliatta

\*\*\*

Medallion of sole with two salmon, creamy cake and ravioli with vegetables of the sun

\*\*\*

"Nossibé" style duckling, strawberries and green pepper (in season), asparagus ballots and granule

\*\*\*

Risotto with seasonal vegetables \*/\*\*

### Desert

Red fruit soup with Sichuan pepper, vanilla ice cream and almond biscuits\*

\*\*\*

Pineapple cooked in spicy syrup and flambéed in rum, served with coconut sorbet \*/\*\*

\*\*\*

Chocolate marquise with candied orange peel\*

\*\*\*

Cheesecake, seasonal fruit coulis\*

\*\*\*

Cheese platter from "Pays de Herve" with Liège syrup (supplement of 2 €)\*

\*Vegetarian dishes

\*\*Vegan dishes

Our offers are made according to seasonal products and for minimum 10 people.

**We offer a selection of our different dishes, subject to modifications according to the seasonal products of the market.**

**Please make a unique choice for all guests.**

**The number of participants must be communicated to us in writing at least 5 days before the event.**



# WHAT ARE YOU WAITING FOR?

pentahotel LIEGE

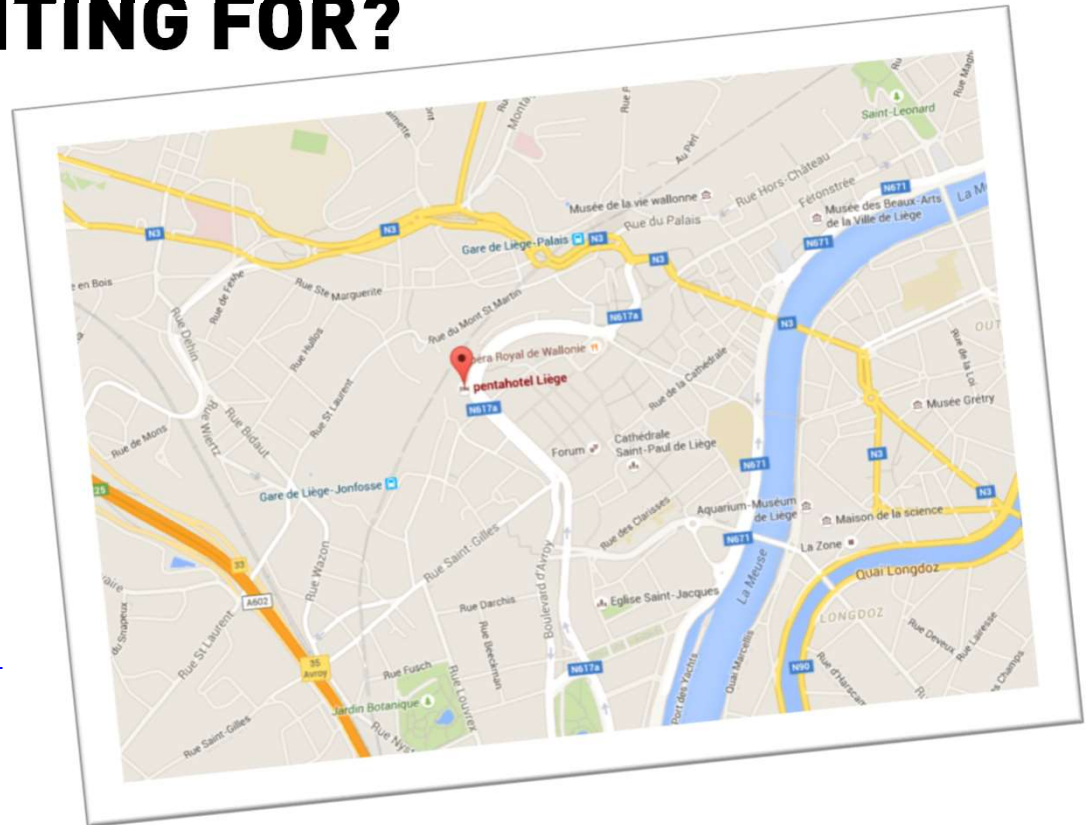
100 bld de la Sauvenière

4000 Liège

T : +32 (0)4 221 77 20

F : +32 (0)4 221 77 01

@ : [sales.liege@pentahotels.com](mailto:sales.liege@pentahotels.com)



Brussels-Gent-Antwerp-Bruges: E40 / A3 direction Liège. A602 exit « Liège Avroy » - N607 Direction « Centre » then « Palais des Congrès », then follow direction « Centre » again.

Luxembourg – Les Ardennes : E25 / A26 direction Liège exit « Grivegnée » - N30 direction « Centre » then « Palais des Congrès », then follow direction « Centre » again.

Germany – Aachen – Maastricht : E40 / A3 – follow E25 Luxembourg – N90 direction « Huy » - direction « Palais des Congrès », then follow direction « Centre » again.

Paris – Charleroi – Namur : E42 / A15 : Follow A602 direction « Liège » exit « Liège Avroy » - N607 direction « Centre » then « Palais des Congrès », then follow direction « Centre » again.

**Say ohh la la penta**

**PENTA  
HOTELS**

# PENTACTIVITIES. AROUND YOUR HOTEL

- **The Boverie Museum:**

La Boverie houses the collections of the Museum of Fine Arts of Liège and a brand new space to host temporary exhibitions multiple facets, which represent each time a unique experience for the visitor.  
The park surrounding the museum is very pleasant.  
Also consider using the river shuttle



- **La maison du Peket:**

This is a place that deserves more than one detour and many halts to the rhythm the sympathetic local beverage declined in about thirty fruity fragrances.



- **La Batte:**

The Batte market, commonly called the Bat by the Liégeois, is a Sunday market, international market-situated along the left bank of the Meuse in Liège, Belgium. Dating from 1561, it is the oldest market and, with its 4 to 5 million visitors annually, one of the most important in Europe.



- **La gare des Guillemins :**

A new station, designed by the architect Spanish Santiago Calatrava Valls, has been inaugurated on 18 September 2009 after a ten years of work. Its aesthetics is generally considered a success, the train station attracts many tourists and visitors to Liège is today an emblem of the city and the monument of Liège

- **La brasserie Curtius:**

Taste your beer otherwise.  
Brasserie C welcomes you warmly.

These indications are for informational purposes only.  
As the pentahotel of Liège is not linked to any of the companies mentioned

**We're guessing you're coming  
to see more  
than just our fabulous hotel**



# Teambuilding activity ideas in Liège...

- Escape room: GET OUT  
<http://getoutliege.be/fr/>
- FLY IN  
<http://fly-in.be/>
- blind test ou Quizz ? Clam'Art  
Axelle Clamart 0497/743.005  
[axelle.clamart@gmail.com](mailto:axelle.clamart@gmail.com)
  - The good time company  
<http://www.thegoodtimecompany.com>
  - Goolfy (The Square)  
[info@thesquareliege.be](mailto:info@thesquareliege.be)  
<https://www.thesquareliege.be/>
  - Bowling  
<http://www.bowlingcarredas.com/>
  - Brasserie C Visite  
<http://brasseriec.com/>
  - One Reality (virtual reality free rooming)  
<https://one-reality.be/>
- Team building & évènement  
WE VENTURES  
Téléphone: [+32 \(0\) 80 80 00 98](tel:+322080800098)  
Email: [info@weventures.be](mailto:info@weventures.be)  
<https://fr.weventures.be/>
- Team building & évènement  
CINEREA Benelux  
Téléphone: [+32 483 40 34 26](tel:+322483403426)  
Email: [vanessa.jarlot@cinerea.be](mailto:vanessa.jarlot@cinerea.be)  
<https://cinerea.events/>
- Magician's Company  
[www.in-the-air.be](http://www.in-the-air.be)  
[clement@in-the-air.be](mailto:clement@in-the-air.be)  
0032 474 32 51 69
- Blegny Mine Visite  
<https://www.blegnymine.be/>
- Fort Aventure  
<http://fortaventureevents.be/>
- Histoire de la préhistoire  
<https://www.prehisto.museum/>

These indications are for informational purposes only.  
As the pentahotel of Liège is not linked to any of the companies mentioned

**WELCOME  
TO THE WORLD  
OF PENTA!**

**PENTA**  **YOU!**